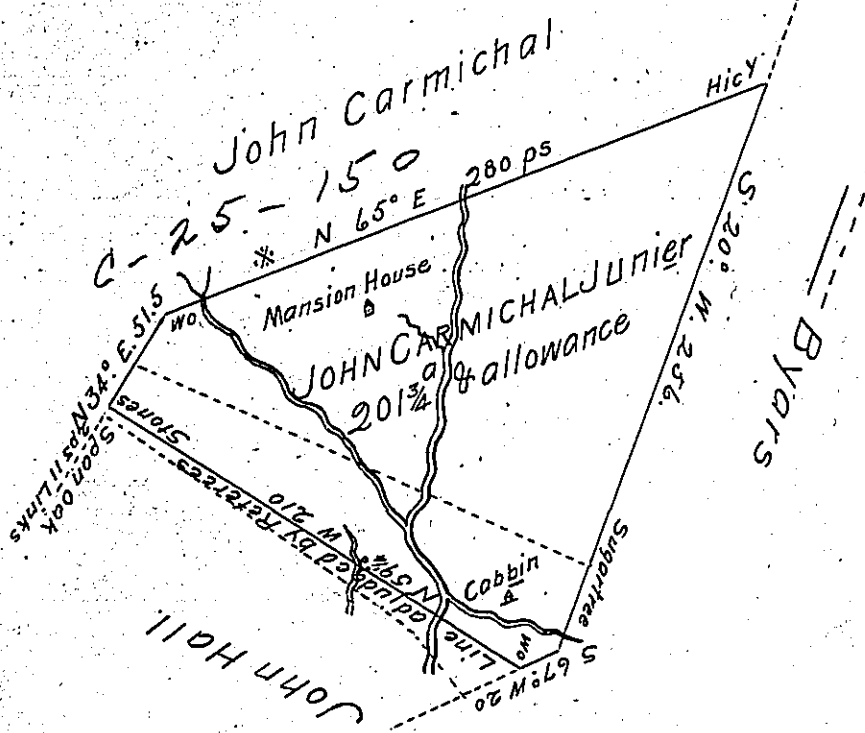


\* Say N 69 E 280



Situate on Rowland's Run a branch of Redstone Creek in Franklin Township Fayette County and surveyed to John Carmichael agreeably to the outward lines but since altered in consequence of an Order of the Honorable Board of Property - A return of which survey has been made probably by the hands of John Carmichael Junior - But as no certain evidence thereof appears upon Record, I now send a copy of the Original with the following observations - All the dotted lines are mere representations of the controverted part with the adjacent Neighbours - which was decided by Referees - the Title to <sup>the</sup> whole embraced in the Black lines - has been decided by regular Course of Law - therefore I think it needless to recapitulate the caveat requested by John Carmichael Junior relative thereto as in the former Returns - the Verdict of the Court being in such case decisive.

Andrew Porter Esquire }  
 Surveyor General }  
 For Alexander M. Clean Deputy

Note - The Survey was made in Pursuance of a Warrant dated the 28th day of November 1785.  
 A.P.C.B. Ac M. Clean Deputy

IN TESTIMONY that the above is a copy of the original remaining on file in the Department of Internal Affairs of Pennsylvania, made conformably to an Act of Assembly approved the 16th day of February, 1833, I have hereunto set my Hand and caused the Seal of said Department to be affixed, at Harrisburg, this twelfth day of April 1904

Joseph P. Brown  
 Secretary of Internal Affairs.

